

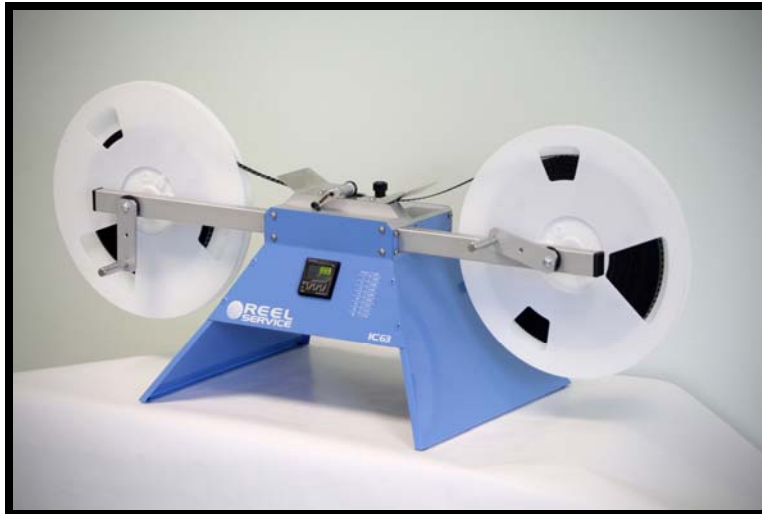
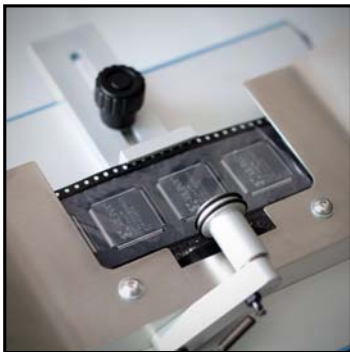
## IC63 COMPONENT COUNTER



Prevent a stock shortage and line-down situation by using the IC63 Component Counter to verify exact stock quantities of all your reeled components.

The IC63 Component Counter allows you to accurately count taped components in an effective and efficient manner without inducing damage to the parts or the carrier tape. Counting can also be performed in both winding directions.

In addition to its counting purpose, the IC63 can be utilised as an inspection base. With the reel fitted to the IC63 in the normal counting manner, your operators can manually inspect the taped parts while the count is taking place.



### FEATURES

- Bi-directional counting, will subtract count when the direction of the tape is reversed.
- Tape pitch from 2mm upwards, ideal for counting 0201, 0402 etc.
- Accurate counting of all components in embossed (black or clear) & punched (paper and plastic) carrier tape.
- Reel widths from 8mm up to 56mm.
- Simple operator interface simplifies pitch setting.
- Makes an ideal tape inspection platform in addition to its counting function.
- Standard configuration allows 7", 13" and 15" diameter reels to be counted. Standard 22" reels can be accommodated when optional extension arms are fitted.
- Rigid metal construction with a wide, sturdy base.
- The IC63 includes a wrist strap connection point allowing ESD protection when handling static sensitive components.
- Reel spindles are mounted on bearings for smooth, durable operation.
- Accepts tape pockets up to 20mm deep, ideal for large connectors etc
- Portable and easy to use